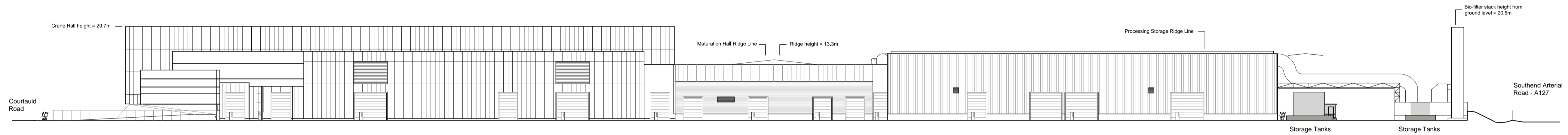


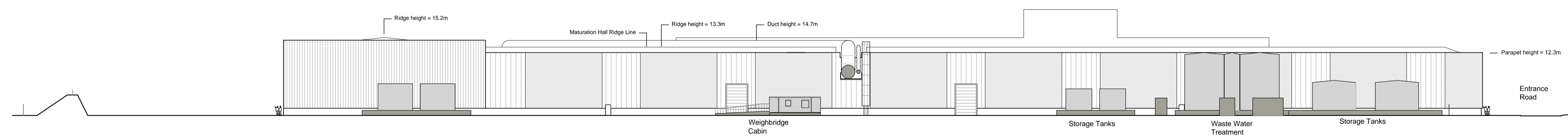
West Elevation



South Elevation



East Elevation




North Elevation

NOTES:

Acoustic roller shutter doors and cladding, where required, is to provide a weighted sound reduction index of 32dB(RW).

Internal acoustic absorption to buildings where required must be Class A acoustic absorber to comply with the requirements of BS EN ISO 11654. Total surface area to be treated with acoustic absorber should correspond to at least 50 percent of the internal surface area of walls and the roof.

All materials and finishes that are either used or exposed to the conditions and atmosphere within the Maturation Halls must be appropriate for:
 The corrosive atmosphere.
 Fire rating.
 Temperature & humidity.

Balfour Beatty 

Courtauld Road MBT Facility

Title: **MBT Facility Elevations
 Roller Shutter Schedule**

Drawing No: **PLA_009**

Scale: **1:500 @ A1**